

HIGH DEFINITION SPORTY SUNGLASSES

SKU: SunSportHD



**USER MANUAL
FCC CE**

THANK YOU FOR PURCHASING THE HIGH DEFINITION SPORTY SUNGLASSES

Please read this manual before operating the High Definition Sporty Sunglasses and keep it handy.

The High Definition Sporty Sunglasses are a pair of sunglasses with a hidden camera in the frames. These sunglasses are not only great for spying. Since they're compact and lightweight, you can take them everywhere. Be ready to film whenever, wherever. Wear at an event or special occasion to leave your hands free for food and handshakes. People will act more natural than if you were lugging around bulky camcorder. Capture important moments just by turning your head. Film your hike, vacation, or road trip. Remember everything the way you saw it—the beautiful scenery, special moments with family, or a lovely sunrise outside the window of an airplane. This is a fun gadget you don't want missing from your collection.

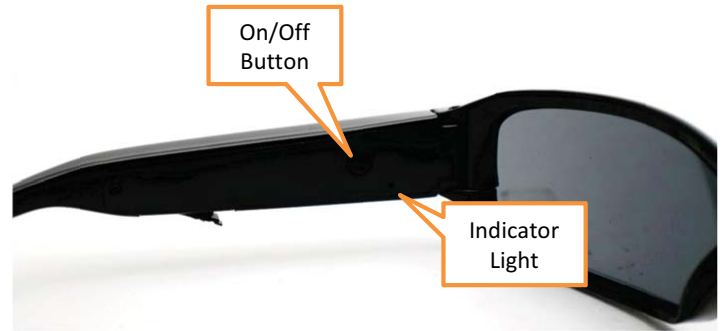
Capable of capturing 30 frames per second at 1280 x 720p resolution. This top of the line product isn't limited to use on sunny days.

Your purchase should include:

- 1 x pair of High Definition Sporty Sunglasses
- 1x USB Cable
- 1 x Cleaning Cloth
- 1 x Instruction Booklet

IMPORTANT NOTICE: Your sunglasses might include headphone; however, these sunglasses do not use headphones, so please disregard them.

GET FAMILIAR WITH YOUR HIGH DEFINITION SPORTY SUNGLASSES



OPERATING THE HIGH DEFINITION SPORTY SUNGLASSES

IMPORTANT NOTICE: Allow the device to charge 4 – 6 hours before using.

HOW TO CHARGE YOUR HIGH DEFINITION SPORTY SUNGLASSES

1. Plug USB cable into the USB port on the sunglasses
2. Plug the USB cable into the USB port on your computer
 - The yellow indicator light will turn on
 - Your sunglasses are now charging

TIP: When the battery is low the blue and yellow indicator lights will flash, the device will turn OFF, and your files will be saved.

HOW TO TURN ON YOUR HIGH DEFINITION SPORTY SUNGLASSES

1. Ensure you have inserted a MicroSD Card into the MicroSD Card slot
2. Press and hold the On/Off button
 - The yellow indicator light will turn on
 - The device is now ON and in **standby mode**

HOW TO TURN OFF YOUR HIGH DEFINITION SPORTY SUNGLASSES

1. Press and hold the On/Off button
 - The indicator light will turn off
 - The device is now OFF

*TIP: When the device is in **standby mode** it will automatically shut off after being idle for 1 minute.*

HOW TO RECORD VIDEO

1. Ensure you have inserted a MicroSD Card into the MicroSD Card slot
2. Turn the device ON and in **standby mode**
3. Press the On/Off button for two seconds

- The yellow indicator light will flash three times and then turn off
 - The device is now recording
4. Press the On/Off button once
 - The blue indicator light will flash three times and then turn off
 - The device is now OFF
 - Your video has been saved

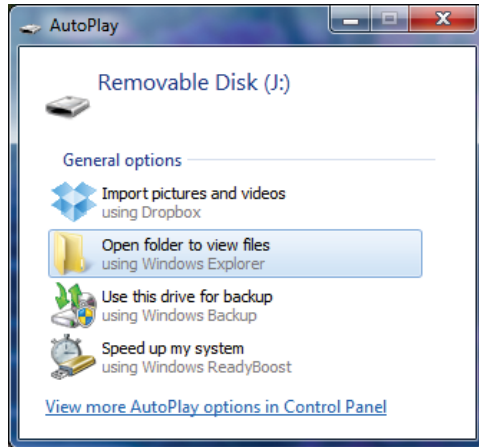
HOW TO TAKE PHOTOS

1. Ensure you have inserted a MicroSD Card into the MicroSD Card slot
2. Turn the device ON and in **standby mode**
3. Press the On/Off button once
 - The yellow indicator light will flash once
 - Your photo has been saved

TIP: If the MicroSD Card is full the blue and yellow indicator lights will flash for 30 seconds and the device will turn OFF.

RETRIEVE THE FILES TO YOUR PC

1. Plug the device into your PC using the USB cable
2. Locate "Removable Disk" inside the (My) Computer folder
 - AutoPlay Removable Disk > Open folder to view files



Or...

- Go to Start > Computer > Removable Disk



3. Open the Removable Disk drive
4. Open the DCIM folder
5. Double click the file you want to view
 - VLC Player is recommended for watching videos

TROUBLESHOOTING

HOW TO RESET THE DEVICE

- Plug USB cable into the USB port and then unplug the USB cable from the USB port

THE DEVICE WON'T TURN ON

- Charge the device for at least 4 hours before the first use
- Make sure the charging cable is securely inserted into the device and into the power source

THE DEVICE ISN'T CHARGING

- Replace the battery or charging cable
- If you are charging via a wall power source, you may need to charge via your PC. The AC adapter might be bad

THE DEVICE HAS CRASHED

- You need to reset the device

MY COMPUTER DOESN'T RECOGNIZE THE DEVICE

- Unplug the device from your PC and reboot the device
- Unplug the device from your PC and reboot your PC
- Try using a different USB slot on your PC
- Replace the USB cable

THE SOUND OR VIDEO IS UNCLEAR

- The device needs charging

SPECIFICATIONS

Video Resolution	1280 X 720p
Video Format	AVI
Frames per Second	30
Recording Time	2 hours
Motion Detection	No
Photo Resolution	2560 x 1920
Photo Format	JPEG
Water Resistant	No
Battery Life	2 hours
Type of Memory	MicroSD Card
Memory Capacity	32GB
Recording Capacity	2GB ≈ 1 hour 4GB ≈ 2 hours 8GB ≈ 4 hours 16GB ≈ 8 hours 32GB ≈ 16 hours
USB Interface	2.0 USB
Player Software	VLC recommended
Operating Systems	Windows 2000 Windows Me Windows XP Windows Vista Windows 7 Windows 8 Mac OSX Linux